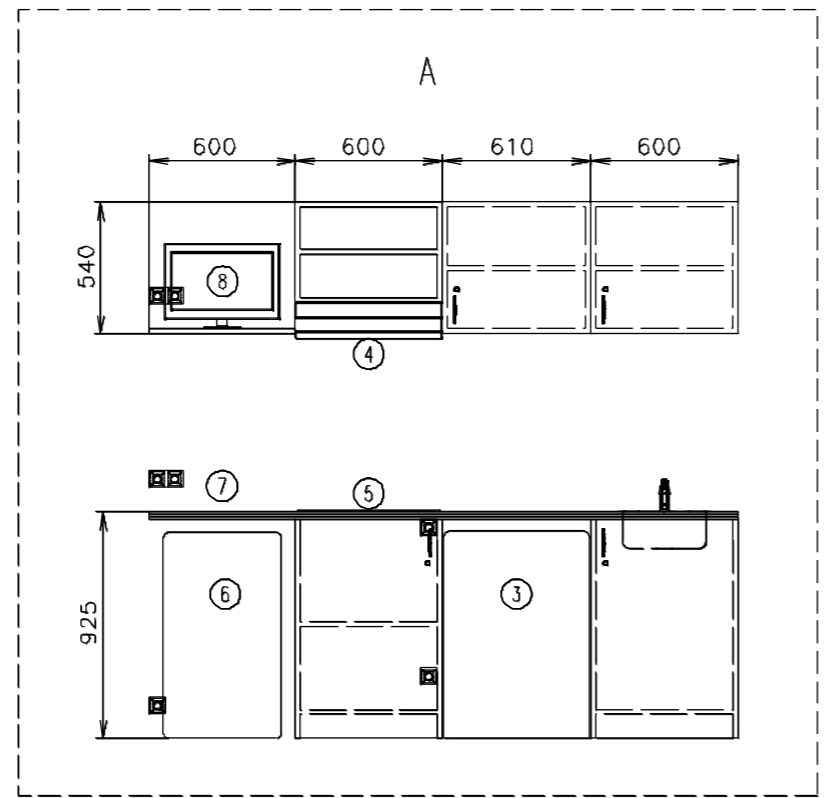
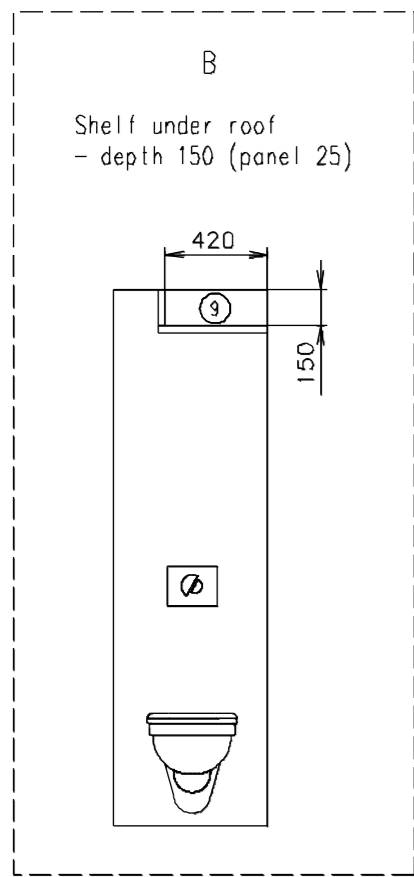
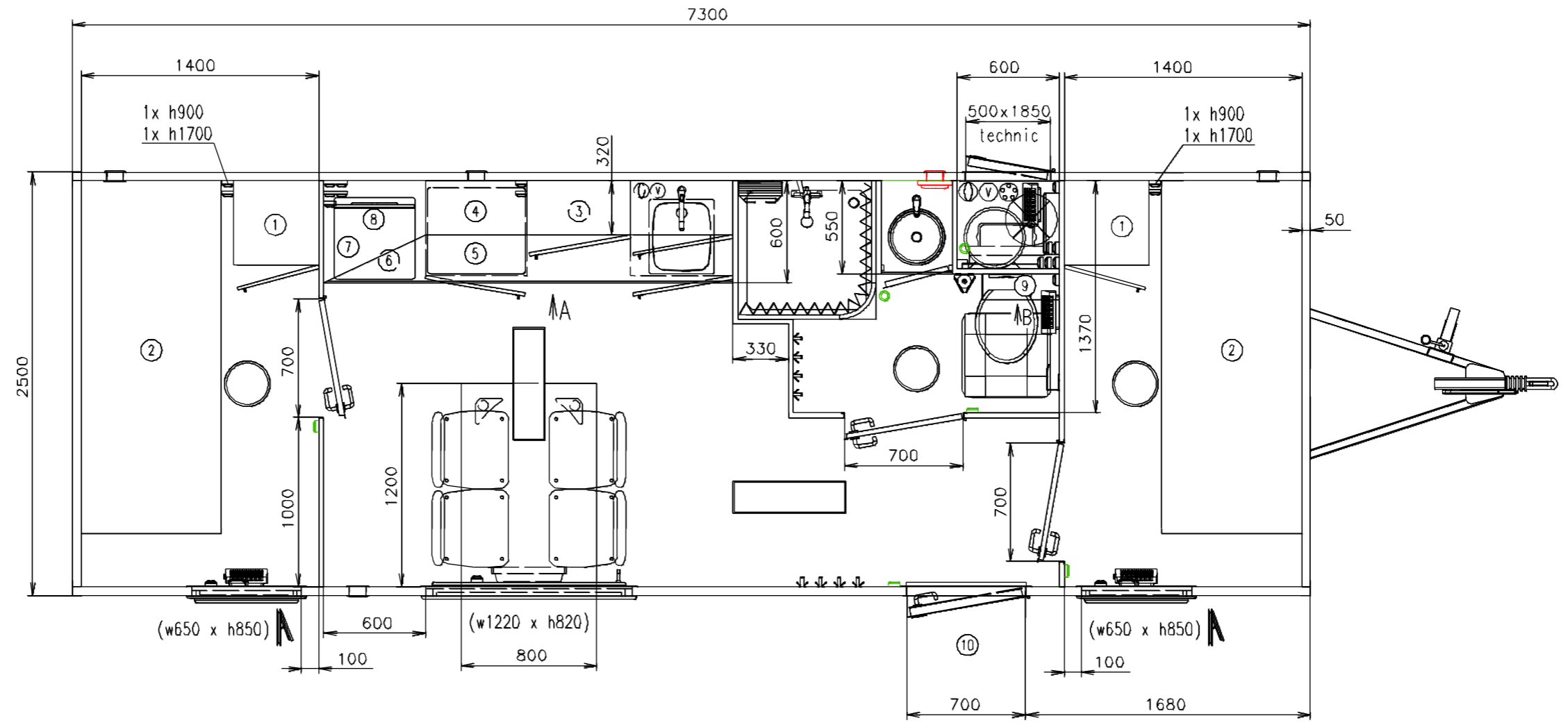


Connection hoses and cables	
Water hose:	✓
Waste water hose:	✓
Electric cable:	✓



(Cabling and piping is not shown on the 3D views and drawings)

Notes:

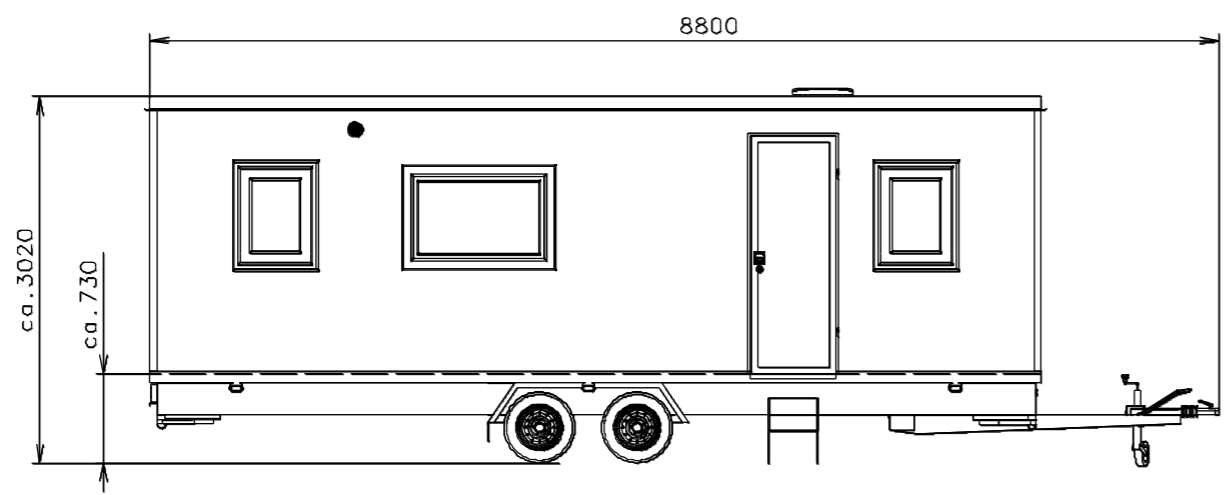
Interior height:	2200 mm	Total weight:	2600 kg
Color:	RAL 9010	Tare weight:	2170 kg
Floor:	PVC gray	Centre of wheels from rear side:	3590 mm
Date:	11.9.2015	Wheels:	165 R13C

EUROWAGON

Drawing number:
33-73-4_1/2

Connection hoses and cables	
Water hose:	✓
Waste water hose:	✓
Electric cable:	✓

- Ⓥ Water connection 3/4" (through the floor)
- Ⓢ Electric connection (through the floor) (380V-16A)
- Ⓜ Effluent connection 1"
- Ⓟ Power point
- Ⓡ Double power point
- Ⓛ Light switch
- Ⓜ Switch board (1100 over floor)
- Ⓛ Droplight
- Ⓞ Droplight
- ⊗ Sensorlight
- Ⓜ Heating (500W)
- Ⓜ Heating (750W)
- Ⓜ Electric ventilator 230V (with light)
- Ⓞ Floor drain hole
- Ⓜ Shower (800x800) Cola
- Ⓜ Kitchen sink Alveus Basic 10 + standard water tap
- Ⓜ Sink ø335 (stainless steel) + standard water tap
- Ⓜ Hanging toilet + pump Setsan
- Ⓜ Hot water boiler Slim (50 l)
- Ⓜ Window opening inside (870 over floor)
- Ⓜ Window opening out (870 over floor)
- Ⓜ Ventilation ø120
- Ⓜ Roof window Dometic (400x400)
- Ⓜ Chair
- Ⓜ Desk permanent fixed (1200x800)
- Ⓜ Brush toilet
- Ⓜ Toilet paper holder
- Ⓜ Shelf steel
- Ⓜ Shower curtain
- Ⓜ Clothes hanger
- Ⓜ Mirror (400x400)
- ① Cupboard (500 x 500 x 1950)
- ② Bunk bed (2080 x 825)
- ③ Dishwasher
- ④ Cooker hood
- ⑤ Electric cooker - 4 hotplate
- ⑥ Fridge
- ⑦ Coffee machine
- ⑧ TV 19" + antenna
- ⑨ Shelf under roof (sketch)
- ⑩ Standard hanging stairs - long



(Cabling and piping is not shown on the 3D views and drawings)

Notes:

Interior height:	2200 mm	Total weight:	2600 kg
Color:	RAL 9010	Tare weight:	2170 kg
Floor:	PVC gray	Centre of wheels from rear side:	3590 mm
Date:	11.9.2015	Wheels:	165 R13C

EUROWAGON

Drawing number:
33-73-4_2/2