

# VIAVAC GBL2



Compact for  
glass.

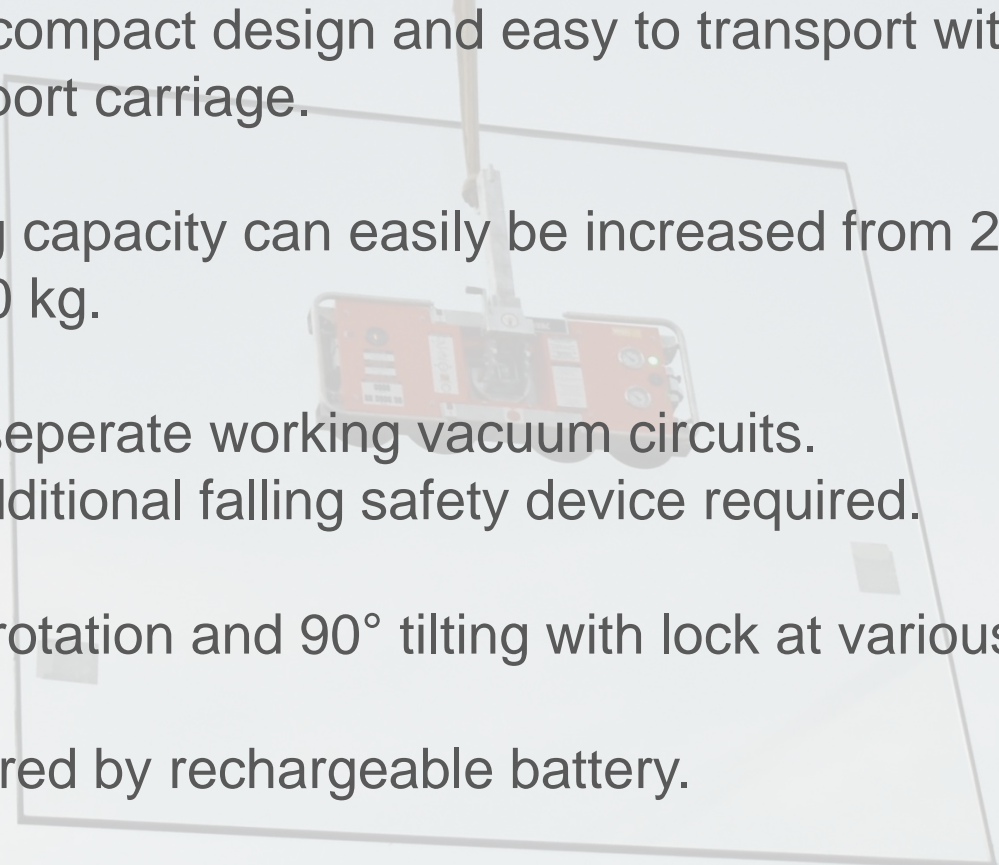
# VIAVAC GBL2



The VIAVAC GBL is very compact for quick, easy and trouble-free installation of glass panels weighing up to 250 kg. With the extension arms suitable for mounting up to a weight of 500 kg.

# Advantages VIAVAC GBL2

---

- 
- ✓ Very compact design and easy to transport with the transport carriage.
  - ✓ Lifting capacity can easily be increased from 250 kg to 500 kg.
  - ✓ Two separate working vacuum circuits.  
No additional falling safety device required.
  - ✓ 360° rotation and 90° tilting with lock at various positions.
  - ✓ Powered by rechargeable battery.
  - ✓ Complies with all EU safety regulations.

# VIAVAC GBL2



Safe mounting method.  
Prevents physical overloading of your employees.

# VIAVAC GBL2



The low construction height makes the VIAVAC GBL compact and ideal for use in renovation projects.

# VIAVAC GBL2



The VIAVAC GBL is optionally available with radio remote control.  
Often used when mounting glass in hard-to-reach areas.

# Applications VIAVAC GBL2



Mounting of glass in an angle

Low in weight for mounting glass with the use of a mini-crane.



## Options GBL2



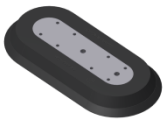
Transport carriage. Prevents damage during transport or transport of the vacuum device.



Radio remote control with safety function.



Extension set for mounting glass up to a weight of 500 kg.



Spare suction cup SP21. Suitable for mounting glass elements.

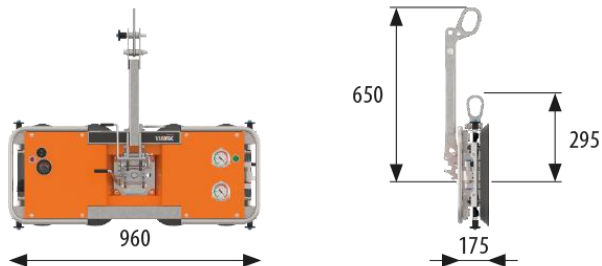


Extra battery and charger set in box.

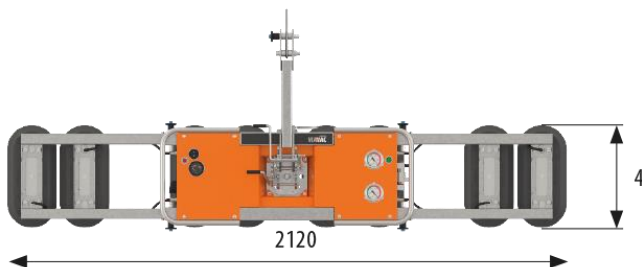


# Specifications model GBL

**GBL2-250**



**GBL2-500**



**GBL2-250**

Lifting capacity: max. 250 kg  
Own weight: 32 kg

**Battery:**

12V / 5Ah

**Battery charger:**

Provided on transport carriage, power supply 110/240V.  
After about 6 hours fully charged.

**Vacuum system:**

Two independent vacuum circuits.

**Safety:**

- Two independently operating vacuum circuits.
- Double safety factor of the maximum load indication.
- Acoustic alarm by low vacuum level.
- Large vacuum buffer.
- Vacuum gauge with red/green signal lights.

**Norm:**

Complies the CE regulations 2006/42/EC en EN-13155.

## **VIAVAC vacuum lifting bv**

Bedrijfsweg 6  
3411 NV Lopik  
The Netherlands  
T: +31 348 - 449 660  
E: [info@viavac.com](mailto:info@viavac.com)

[www.viavac.com](http://www.viavac.com)